

Mounting Instructions

Yagi-Uda Antennas

General Mounting Instructions

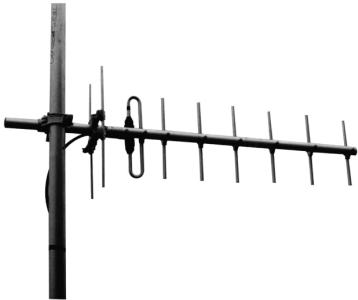


Fig. 1
Typical Vertical Polarisation Installation

- 1** Mount the antenna in an unobstructed location using a suitable clamp. Assorted clamps are available from Amphenol Antenna Solutions.
- 2** Manoeuvre the antenna to the desired direction and into the correct polarisation.
- 3** If the antenna is to be operated in vertical polarisation (VP) and the antenna dipole is of the tube type, the live-side of the dipole, to which a black plastic ring is attached, must be uppermost. The small black bung in the hole of the tube at the lower extremity must be removed (see Fig.1): 'live-side' uppermost – IMPORTANT for phasing multiple antennas.
- 4** Carefully clamp the antenna down-lead cable to the boom (using cable-ties for example), and avoid kinks or bend radiuses that are too tight for the type of cable. Run it down the mounting structure. Drip loops can be fashioned at the discretion of the installer.
- 5** Connect and seal the down-lead connector to the feeder cable mating connector in the approved manner (different operators and installers have different standards to which they work). Some form of water-proofing will usually be required, e.g. self-amalgamating tape, Denso or other.

There is no maintenance required on these passive units, but a visual inspection every two years is good practice and should help to identify any deterioration to such things as the antenna, cable, bracketry or mounting structure.